

Urban Rail

Delivering localized, world-class expertise in urban rail.



Unrivalled expertise in high-capacity urban rail

Who we are

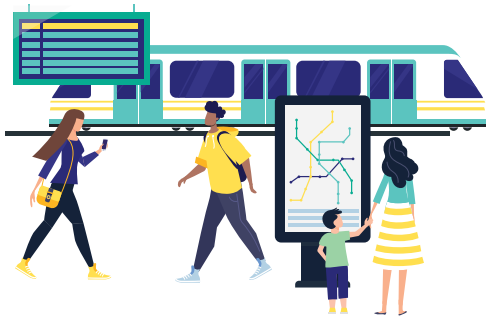
RATP Dev is a subsidiary of RATP Group, the world's third largest urban transportation operator. The Group has a century-long heritage as the historic operator of the of the ultra-dense, constantly-modernized Paris network and oversees over 100 operations in 15 countries.

RATP Dev delivers localized, world-class expertise to the management of urban transportation systems – operating the world's most complex urban rail systems. With over 2,000 in-house engineers, we master the entire value chain.

As a world leader in high-capacity urban rail, we listen to our clients to understand the local context and leverage our expertise to provide financially effective, tailored solutions.

We build, deliver and commit for the best of public transport – every day, everywhere, for everybody – to make it the natural choice for cities and passengers.

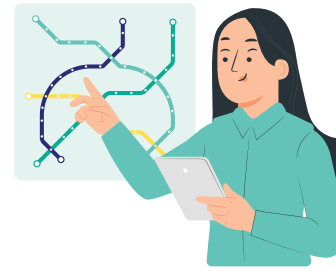
What we deliver



Operational Excellence

Delivering high-quality mass transportation, daily.

- Speciality in large flows of passengers at exceptional frequency.
- Highest international standards.
- Guarantee of reliability and punctuality.
- Uncompromising commitment to safety.
- Lean but efficient organization, with multi-skilled staff.
- Experience in highly complex rail systems.
- Management of large-scale events.
- Expertise in disrupted situation management and continuity of service.
- Implementation of data driven solutions to measure and boost our safety and operational performance.



Complex Project Delivery

Supporting cities in the design and implementation of complex urban rail projects.

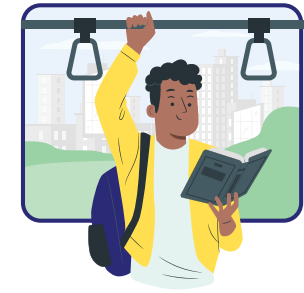
- Optimization of project design through to critical eye.
- Project management, complying with schedules and budgets.
- Service continuity during ongoing works.
- Pre-operational auditing, system acceptance and trial runs.
- Commissioning of new lines and extensions.
- Automation of metro lines without major traffic disruption.
- System upgrades and modernization of infrastructure.



Asset Reliability and Sustainability

Taking care of assets across all stages.

- Complete asset lifecycle management, from design to end-of-life.
- 360° expertise: multi-material, multi-builder and multi-technology.
- Maintenance Level 1 to Level 5.
- Predictive maintenance to optimize total cost of ownership.
- Industrial engineering.



Societal, Social and Environmental Impact

Committing to sustainable cities and creating local value.

- Societal commitment: contribution to regional development, integration in the local ecosystem, employability enhancement, local workforce and knowledge transfer.
- Social commitment: ambitious training programs, internal mobility, sustained social dialogue and quality of work-life balance.
- Environmental impact: energy consumption management and water management.

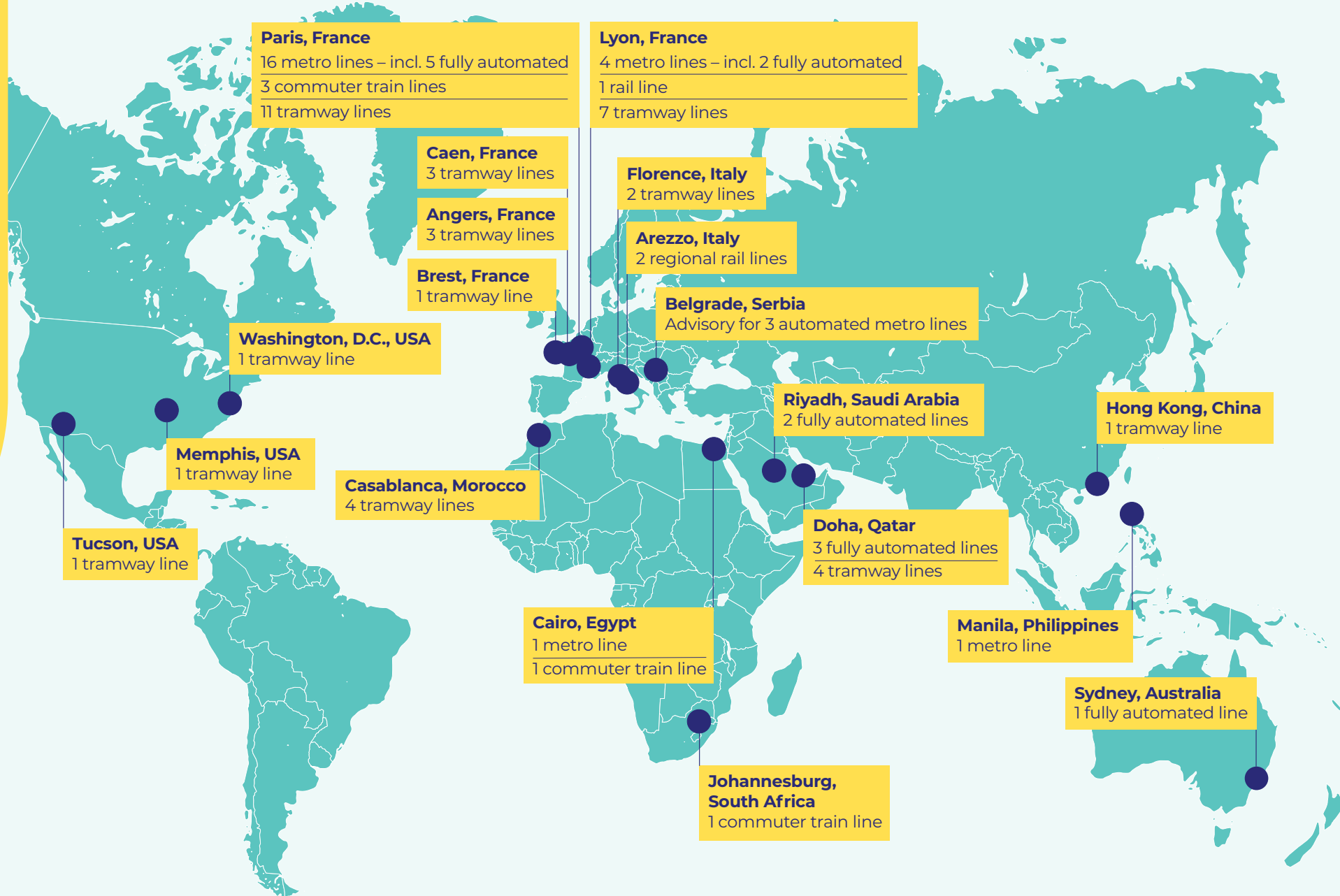


High-Quality Passenger Experiences

Combining mass transport with comfort and personalization.

- Customer-centric culture.
- Fluid, intuitive, multi-modal journey.
- Reliable passenger information.
- Safety and universal accessibility.
- Practical additional services.
- Animations, arts and culture.

Proven track record in urban rail



120

years of experience
in urban rail



28

metro lines, including
13 fully automated lines*



8

railway lines*



39

tramway lines*



2.8

billion journeys per year on
our urban rail lines worldwide

*Currently or soon operating, with lines under construction

Paris, France

Designing, operating and maintaining the world's most complex rail system.

- 2 billion+ passengers per year
- 1,000 km, 400 stations

Key achievements

- Automation of two century-old metro lines without major traffic disruption (Line 1, Line 4)
- Commissioning of the world's first high-capacity automated metro line in 1998 and renewal of its automatic control system in 2024 (Line 14)
- +154 new stations with more than 102 km of tramway and metro lines between 2012 and 2024
- Operating Europe's busiest line with 1.3M passengers per day (RER A)



Doha, Qatar

Developing a multi-modal transport network that is modern, safe, efficient and sustainable.

- 13.9 million passengers per year
- 111 km, 62 stations

Key achievements

- Stellar performance during the FIFA World Cup 2022 with 18 million passenger journeys at 99.8% service performance



Johannesburg, South Africa

Providing top-quality service for Gautrain, Africa's fastest regional train.

- 9 million passengers per year
- 80 km, 10 stations

Key achievements

- 160 km/h peak hour speed
- 94% customer satisfaction



Riyadh, Saudi Arabia

Creating a fully automated metro network for the backbone of the mass transit system for the Saudi capital.

- 64 km, 40 stations

Key achievements

- Over 50% of local staff
- Mobilization for the commissioning of Blue Line and Red Line

Cairo, Egypt

Delivering the best international rail standards in Cairo.

- 2 million passengers per year
- 70 km, 12 stations

Key achievements

- Successful integration of several extensions for Green Line 3
- Progressive opening of the new Capital Train line
- Over 90% of local employees



Casablanca, Morocco

Supporting the most ambitious urban transport project in Africa and delivering a reliable service to relieve traffic congestion.

- 51 million expected passengers per year
- 72 km, 111 stations

Key achievements

- Successful network extensions: commissioning of Line T1 in 2012, Line T2 in 2019 and Lines T3 and T4 in 2024
- Seamless internalization of rolling stock maintenance in 2014





ratpdev.com

ratpdev.communication@ratpdev.com



RATP
GROUP

September 2024